

2011 Color Supplement

New Mayco Glazes

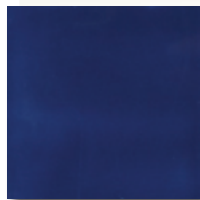


Mayco®

"We can take the heat"

www.maycocolors.com

Foundations & Foundations Sheers



FN-041
Medium Blue

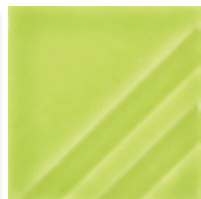
Vibrant additions to the Foundations Sheers brighten an already exciting line-up. Artists and decorators are rediscovering the transparent beauty Sheers lends to their work. Vertical pieces and textured surfaces invite the glaze to flow and pool, creating visual depth.



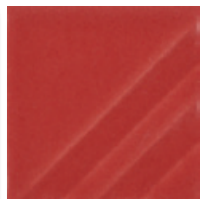
FN-222
Indigo



FN-223
Amethyst

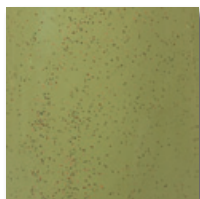


FN-224
Key Lime



FN-225
Watermelon

Speckled Stroke & Coat[®]



SP-279
Speckled It's Sage

Elements[™]

Canister combines new Foundations Sheers to create flower petals that deepen in color.

New Elements[™] expand into the color space of red and yellow toned glazes. Sea Green, Turtle Shell and Autumn provide color breaks similar to cone 6 Stoneware glazes. Mirror Blue is a lower temperature version of Stoneware's Sapphire - application variances lead to interesting changes in color depth.



EL-125
Sahara Sands



EL-126
Coral Reef



EL-127
Rose Granite



EL-128
Wheat



EL-129
Slate



EL-130
Sea Green



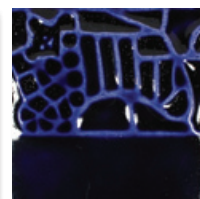
EL-131
Turtle Shell



EL-132
Rust Red



EL-133
Autumn



EL-134
Mirror Blue



The handled platter features new Elements[™] over a base of FN-008 Brown.

Jungle Gems™ Crystal Glaze

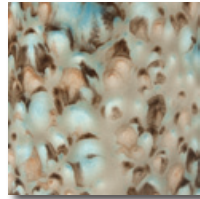
"Art in the Jar"™ gets even better with new free-flowing, wildly colorful Jungle Gems™. Formula tweaks provide a path to replicating some of the old favorites from the leaded days. Letting them run is fun - but do consider them in your design work.



CG-963
Lemon Lime



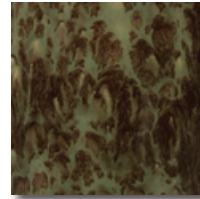
CG-964
Kaleidoscope



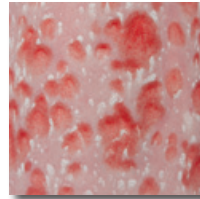
CG-965
Mocha Marble



CG-966
Tiger Lily



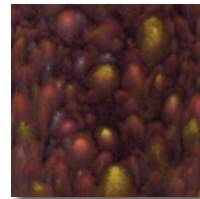
CG-967
Green Agate



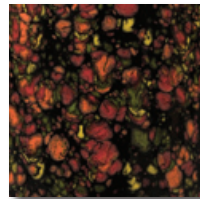
CG-968
Peppermint Twist



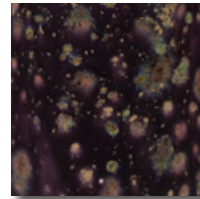
Both pieces feature CG-973 Alligator in combination with EL-125 Sahara Sands and FN-008 Brown.



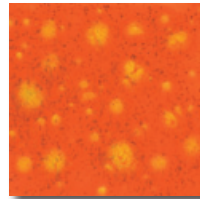
CG-969
Floral Fantasy



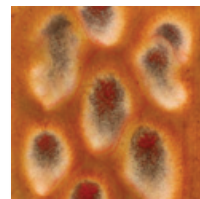
CG-970
Masquerade



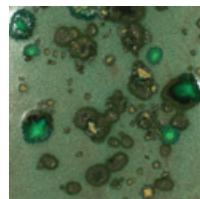
CG-971
Purple Cosmos



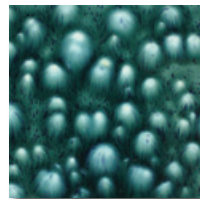
CG-954
Wildfire



CG-972
Dragon's Breath



CG-973
Alligator



CG-974
Bloomin' Blue

STONEWARE WASHES

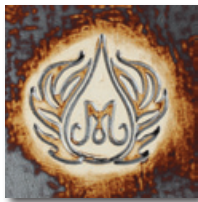
Mayco Washes are metallic pigments mixed with water, prepared as a concentrate. They are commonly used to stain clay bodies or combine with glazes to produce textural effects. Download "Guide to Using Washes" from our website for intriguing suggestions on using washes.



SW-301
Iron Wash



SW-302
Rutile Wash



SW-303
Manganese Wash



SW-304
Copper Wash



Left: SW-104 Black Walnut under a combination of SW-121 Smoke and SW-122 Maycoshino.
Middle: SW-203 Root Beer under SW-122 Maycoshino.
Right: SW-120 Northern Woods under SW-121 Smoke.

STONEWARE

As with all Mayco's Stoneware glazes the new Stoneware glazes exhibit color breaks, floating patterns and movement WITHOUT running off your piece. Experiment with Sapphire, Root Beer, Amber Topaz and Mayco's other 3 new Stoneware glazes for exceptional midrange surface quality



SW-001
Stoneware Clear



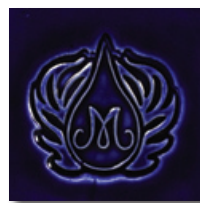
SW-120
Northern Woods



SW-121
Smoke



SW-122
Maycoshino



SW-123
Sapphire



SW-203
Root Beer



SW-204
Amber Topaz