

COLORS

Glazes, Acrylics & Tools for the Ceramic Arts.










We are pleased to introduce to you our 2010 color palette and color catalog. This showcase includes hundreds of decorating and design choices, including every imaginable color, surface finish, suitable for all firing ranges. Whether you are a studio artist, crafter, art educator, potter or commercial producer, you will find products that meet your every need. But perhaps equally important, our color assortment and techniques featured within this catalog will stimulate your imagination and nourish your creative soul.

Our company was founded in 1954, with the premise of producing the industry's highest quality low fire ceramic products. Over the years, we have added other products, such as acrylics, molds, bisque, decorating accessories and most lately, stoneware and other glazes for mid-range temperatures and alternative firing. While products change, one thing does not - we continue to embrace the goal of maintaining the highest quality standards, providing a consistent and dependable product to our consumers.

The guiding principle of personal passion and commitment started by our founder, Robert Umhoefer, has been inherited by us as if it were a family heirloom. While we are not related in the traditional family sense, our ties and dedication to our company and customers are equally strong. And our passion for our work is unparalleled. We proudly present "America's Finest Colors" for "Ceramics. Your Way."

~The Mayco Team

2010-2011 CONTENTS

-  Fired Products:Pg 1
-  Non-Fired Products:Pg 21
-  Decorating Accessories:Pg 26
-  Mayco Gallery:Pg 31
-  Reference:Pg 35



Stroke & Coat

The Most Versatile Glaze
You Will Ever Use!

Here's Why:

Stroke & Coat® is a high performance glaze line that tolerates the widest range of firing temperatures and application methods of any Mayco glaze. It performs on either clay or bisque and can be fired from cone 06 to cone 10 – oxidation or reduction. Versatile enough to fire to translucent or opaque finishes; yet when delicately applied, it can be used for detailed painted brushstrokes. The Stroke & Coat® color palette has colors to meet every need but are also intermixable to achieve exact shades of the designer's imagination. Speckled Stroke & Coats® provide visual depth and variety, with the same performance qualities of Stroke & Coats.® Try

Stroke & Coat® Accents to add dimension to your projects. If you can only have one color line, make it

Stroke & Coat®.



Stroke & Coat®

Stroke & Coat's® unique formulation provides artists endless opportunities with multiple uses and firing ranges including alternative firings such as raku, wood and cone 10.

- **Broad firing range** (from cone 06 – 6)
- **Body Compatibility:** Can be applied to bisque or clay.
- **Glaze Compatibility:** Can be used in combination with Foundations and other Mayco glazes.
- **Versatility of Application:** One coat for brush work and design; 3 coats for opacity.
- **Non-toxic and food safe**

SC-16 Cotton Tail	SC-37 Ivory Tower	SC-55 Yella Bout It	SC-6 Sunkissed	SC-42 Butter Me Up	SC-24 Dandelion	SC-23 Jack O'Lantern	SC-50 Orange Ya Happy
SC-2 Melon-Choly	SC-75 Orange-A-Peel	SC-22 Carrot Top	SC-80 Basketball	SC-4 Salsa	SC-73 Candy Apple Red	SC-74 Hot Tamale	SC-82 Tuscan Red
SC-87 Ruby Slippers	SC-81 Cinnamon Stix	SC-1 Pink-A-Boo	SC-70 Pink-A-Dot	SC-17 Cheeky Pinky	SC-18 Rosey Posey	SC-3 Wine About It	SC-40 Blueberry Hill
SC-85 Orkid	SC-53 Purple Haze	SC-72 Grape Jelly	SC-13 Grapel	SC-33 Fruit of the Vine	SC-58 501 Blues	SC-71 Purple-licious	SC-45 My Blue Heaven
	SC-65 Peri-Twinkle	SC-30 Blue Dawn	SC-11 Blue Yonder	SC-31 The Blues	SC-76 Cara-Bein Blue		



A.



B.

A. Stroke & Coat® designed with eyelash yarn. • B. Stroke & Coat® and Stoneware Glazes at mid-range fire.



Speckled Stroke & Coat®

Speckled Stroke & Coat® features the addition of small specks of color to a base glaze of the Stroke & Coat® line. These specks provide visual depth and texture and do not melt or flow during the glaze firing. Speckled Stroke & Coat® offers the same superior performance as Stroke & Coat®. Speckled Stroke & Coat® is non-toxic and food safe.



Stroke & Coat® Accents

Stroke & Coat® Accents is a dimensional glaze that can be used to create raised designs, outlines, stripes, dots, lines and squiggles. It can be applied directly on clay, unpainted bisque, or over other glazes. Also, clear glaze may be applied if desired. While many dimensional glazes tend to flatten out during firing, Accents fired results will remain clean and crisp. Accents are non-toxic and food safe.



SA-003
White



SA-001
Red



SA-002
Black



A.



B.

Rich Colors,
Superior Performance,
GREAT VALUE!



Foundations



Fundamental Utility

Foundations offer a broad assortment of colors, opacities and textures for the basis of any ceramic project. Its forgiveness during application and firing and consistency in performance make Foundations the perfect staple glaze for any ceramic studio.

Foundations Opaque

Our newest gloss glaze line has been expanded to include new fun, contemporary colors as well as some of your Series 2000 favorites such as Glade Green, Wisteria Purple and Rich Chocolate.

- Glaze layering and glaze combinations
- Use with Stroke & Coats® to create design
- Easy to apply; dries quickly
- Fires to a smooth, level finish
- Non-toxic and food safe

							
FN-001 White	FN-014 Antique White	FN-013 Light Yellow	FN-002 Yellow	FN-040 Pumpkin	FN-016 Harvest Orange	FN-003 Orange	FN-026 Salmon Mousse
							
FN-004 Red	FN-025 Raspberry Whip	FN-015 Brick Red	FN-035 Deep Red	FN-030 Bing Cherry	FN-005 Pink	FN-012 Lavender	FN-028 Wisteria Purple
							
FN-036 Grape	FN-017 Purple	FN-011 Light Blue	FN-034 Big Sky Blue	FN-031 Corn Flower Blue	FN-018 Bright Blue	FN-006 Blue	FN-019 Dark Blue
							
FN-032 Canton Jade	FN-037 Chartreuse	FN-007 Green	FN-027 Glade Green	FN-020 Medium Green			
							
FN-021 Olive Green	FN-033 Mediterranean Blue	FN-010 Tree Green	FN-038 Sand				
							
FN-022 Tan	FN-023 Cinnamon	FN-029 Rich Chocolate	FN-008 Brown				
							
FN-039 Light Gray	FN-024 Gray	FN-009 Black					



A.

A. Glaze combination with Foundations, Stroke & Coat® and Jungle Gems™.

Foundations Sheer

These gloss translucent colors are wonderful for glaze layering and adding color dimension to your creations. The assortment includes many colors from the Series 2000 palette such as Aztec Jade, Yadro and Lustre Green as well as new jewel tones like Saffire Blue. Non-toxic and food safe.



FN-221
Milk Glass



FN-203
Dry Champagne



FN-206
Lemon Ice



FN-207
Orange Slice



FN-210
Victorian Red



FN-209
Floral Pink



FN-208
Crystal Coral



FN-211
Sheer Blue



FN-212
Blue Diamond



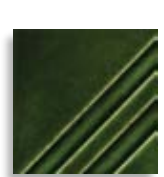
FN-213
Saffire Blue



FN-214
Pastel Jade



FN-216
Sea Glass



FN-217
Evergreen Fir



FN-215
Aztec Jade



FN-219
Lustre Green



FN-218
Green Sapphire



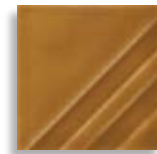
FN-201
Golden Clear



FN-202
Yadro



FN-204
Mudpuddle Brown



FN-205
Saddle Tan



FN-220
Sooty Grey

Foundations Matte

Our matte glazes are friendly to the user with easy application and great results. The matte satin finish is extraordinary. Use Stroke & Coats® over Foundations Matte (formerly Series 2000) for design, contrast and drama. Non-toxic and food safe.



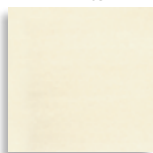
FN-301
Marshmallow
White



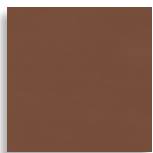
FN-306
Pumpkin
Tart



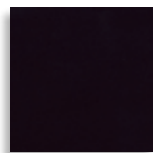
FN-303
Deep Sea
Blue



FN-302
Ivory
Cream



FN-305
Milk
Chocolate



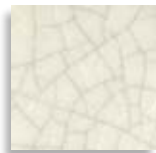
FN-304
Black
Velvet



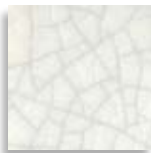
Classic Crackles™

As their name implies Classic Crackles™ produce a vintage crackle appearance in the fired glaze. Featuring a subtle color palette, Classic Crackles™ are very appropriate for decorative home décor items.

Classic Crackles™ are non-toxic. Not recommended for dinnerware due to surface characteristics.



CC-101
Transparent



CC-102
White



CC-107
Green Tea



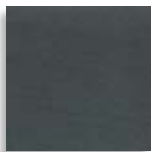
CC-108
China Sea



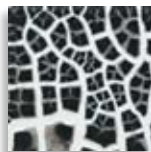
A.

Specialty Glazes

Glazes featured below help achieve special effects and surface textures on their own or in conjunction with other Mayco glazes.



SG-101
Chalkboard Black



SG-201
Black Cobblestone



SG-202
White Cobblestone



SG-302
Snowfall

Chalkboard:

- Simulates a slate finish that can be used as a chalkboard surface – as one of its many applications.
- Chalkboard surfaces can be erased using a felt eraser and/or damp sponge.
- Use as a base glaze with Stroke & Coat® designs on top.
- Chalkboard is non-toxic. Not recommended for dinnerware due to surface characteristics.

Cobblestones:

- Apply over non-toxic glazes to create cracked textures.
- Glazes applied over Cobblestones will break and form unique patterns.
- Cobblestones are non-toxic. Not recommended for dinnerware due to surface characteristics.

Snowfall:

- Snowfall produces snow-like dimensional surfaces – for project accents or as a textural base on which other glazes may be applied.
- Thick applications can result in dramatic dimensional effects.
- Snowfall is non-toxic. Not recommended for dinnerware due to surface characteristics.



B.



C.



D.

A. Painted in all Classic Crackles™ and Stroke & Coat®. • B. Featuring Chalkboard. • C. Stroke & Coat® over Cobblestone. • D. Featuring Snowfall.

Striking Effects

Jungle Gems™

Elements™

Crystalites™

Elements Chunkies™

Pottery Cascades™



Crystals bursting with color, natural earth tones that move and break – physically brilliant on their own or when used with other glazes.

Mayco's specialty glazes add dimension, texture and drama to your works of art. All specialty glazes are non-toxic.

 **Mayco**®

Crystal Glazes

Mayco's crystal glazes - Jungle Gems™ and Crystalites™ - are gloss glaze bases with pieces of glass frits that melt during the firing process. As the crystals bloom, they produce dramatic, colorful effects. We call it "Art in a Jar". Combine our crystal glazes with other Mayco glazes, such as Stroke & Coats® and Foundations for unique glaze combinations. For mid-range fire artists, the crystal glazes maintain their color with increased crystal movement at the higher temperature. Reformulated, Jungle Gems™ join Crystalites™ in being non-toxic, safe for use by artists of all ages. Not recommended for dinnerware due to surface characteristics.

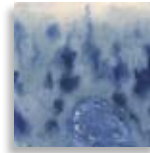
Crystalites™



S-2701
Peacock Eyes



S-2702
Northern Lights



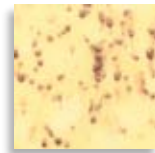
S-2703
Berryberry Pie



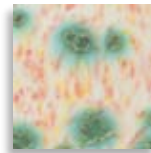
S-2704
Plum Jelly



S-2705
Desert Mist



S-2706
Spiced Banana



S-2707
Lily Jade



S-2708
Oriental Carmel



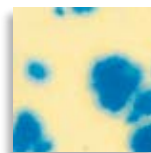
S-2709
Cappuccino Mint



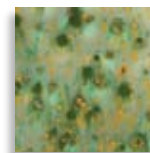
S-2711
Tahiti Grape



S-2712
Monsoon Seas



S-2713
Buttercup Blue



S-2714
Herb Garden



S-2715
Spotted Kiwi



S-2716
Celestial Blue



S-2718
Cosmic Black



S-2719
Cranberry Burst



S-2723
Grape Divine



S-2724
Lotus Blossom



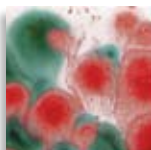
S-2725
Safari



S-2726
Cheetah



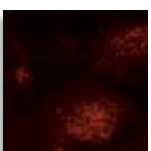
S-2727
Poppy Fields



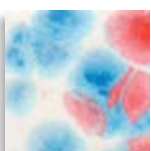
S-2728
Poinsettia



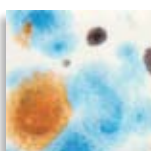
S-2729
Citrus Splash



S-2730
Red Halo



S-2731
Kaboom



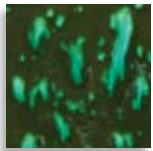
S-2732
Sedona Sky



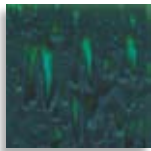
Above: Glaze combinations with Stroke & Coat® and crystal glazes.

- **Expansive Blooms** – We combine yielding base glazes and unique crystal recipes that allow crystals and specks to fully expand and flow.
- **Float & Movement** – Capture the movement and physical texture achieved with midfire glazes at cone 06 temperatures.
- **Crystal Mixtures** – We produce and refine many crystals in house – and combine them with other materials that create unique fired results for you.

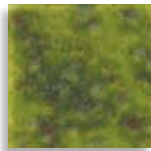
Jungle Gems™



CG-707
Woodland Fantasy



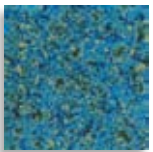
CG-713
Peacock Green



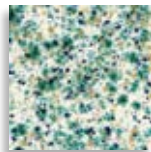
CG-716
Pagoda Green



CG-717
Pistachio



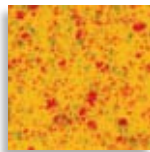
CG-718
Blue Caprice



CG-722
Seawind



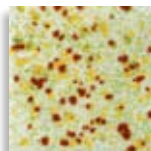
CG-750
Noel



CG-753
Sassy Orange



CG-756
Firecracker



CG-768
Purple Sage



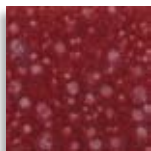
CG-772
Sand Petal



CG-779
Black Opal



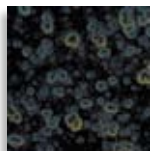
CG-780
Mystic Jade



CG-783
Strawberry Sundae



CG-785
Royal Fantasy



CG-786
Obsidian



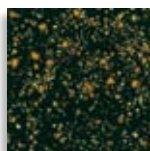
CG-788
Dutch Enamelware



CG-793
Beach Pebbles



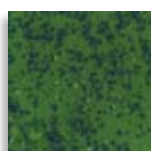
CG-795
Yadro Print



CG-798
Black Iris



CG-958
Lagoon Blue



CG-961
Evergreen



CG-962
Blue Azure



Elements™

Elements™ simulate the aesthetic of high fire pottery at cone 06 temperatures. The level of variegation exhibited by the glaze is influenced by factors such as the number of coats applied, combinations with other glazes, surface textures on the clay body, and firing temperatures. Non-toxic and food safe.

This palette of natural earth tones will produce semi-glossy to matte finishes.



EL-101
Oyster Shell



EL-102
Sandstorm



EL-103
Sea Spray



EL-104
Heather Moor



EL-105
River Birch



EL-106
Tidal Pool



EL-107
Amber Ash



EL-108
Jade Moss



EL-109
Blue Ridge



EL-110
Mudslide



EL-111
Ruby Creek



EL-112
Tornado Sky



EL-113
Spanish Moss



EL-115
Iron Moss



EL-116
Blue Stone



EL-117
Waterfall



EL-118
Blue Grotto



EL-119
Burnished Steel



EL-120
Black Ice



EL-121
Copper Adventurine



EL-122
Malachite



EL-123
Patina



EL-124
Stormy Blue

Elements, Element Chunkies & Pottery Cascades at Cone 6:

These glazes can produce some excellent effects when used with our Stoneware glazes. Use sparingly under or on top of Stoneware glaze. These glazes will cause movement and flow to our Stoneware glazes, so be sure to test first. Keep Elements™, Element Chunkies™ and Pottery Cascades™ away from the bottom of your ware in case of running.

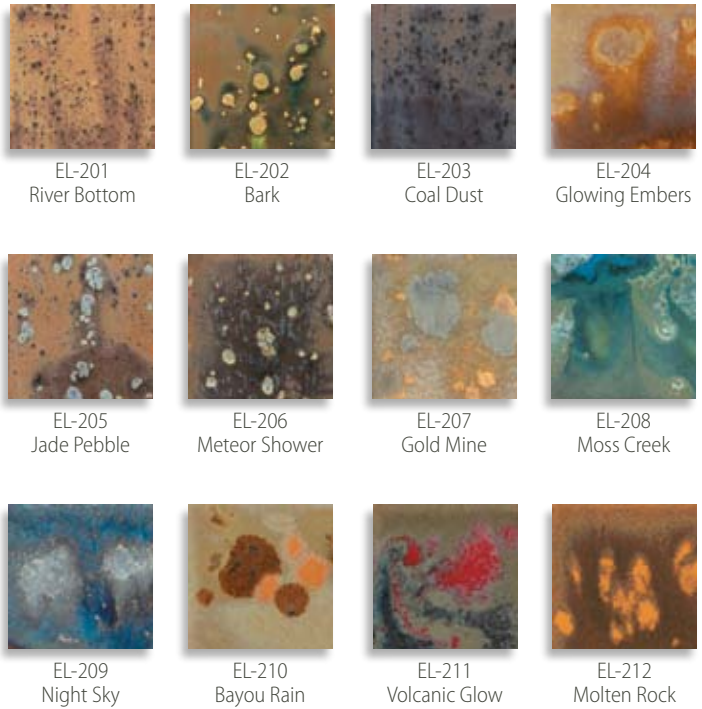


A. Elements™ at mid-range fire.

Elements Chunkies™

Elements Chunkies™ feature glassy crystals added to some of the Elements™ base glazes. The crystals create sooty, charred effects in the finished glaze, simulating specialty higher fire looks. As with Elements™, the level of variegation exhibited by the glaze is influenced by factors such as the number of coats applied, combinations with other glazes, surface textures on the clay body, and firing temperatures.

Elements Chunkies™ are non-toxic - safe for use by artists of all ages. Not recommended for dinnerware due to surface characteristics.



Pottery Cascade™

Free flowing Pottery Cascades™ are gloss glazes that display significant movement, acting as a flux. Used alone, Pottery Cascades™ simulate a brilliant shower of light color. Create dramatic effects by using in combination with other glazes such as Elements™ and Elements Chunkies™.

Whether placed on top or beneath another glaze, Pottery Cascades™ intermingle and interact with other glazes to spawn unique colors, textures, and patterns. Pottery Cascades™ are non-toxic.

Not recommended for dinnerware due to surface characteristics.



A. Glaze combination of Elements™ with Pottery Cascades™.

Underglaze



Palpable Brilliance!

Softly porous, vibrantly colored, applied translucently or opaquely. Colors that fit bisque and greenware and can be fired from cone 06 to 10. The unglazed fired surface has a perceptible appeal that you may find sensuous and "pettable."



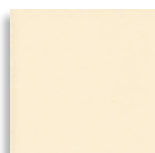
- **Wide Firing Range:** Colors maintain their vibrancy from cone 06 to cone 10.
- **Body Compatibility:** Apply to bisque or clay.
- **Versatility of Application:** One coat for brush work and design; 3 coats for opacity.
- **Intermixable:** Create your own colors by fully blending UG's.
- **One Step Glaze Firing:** Mayco UG's and Mayco clear glazes can be co-fired, producing brilliant color and a gloss finish in just one glaze firing.
- **Non-toxic;** food safe when clear glazed.

Opaque Underglazes

Mayco's Underglazes have been reformulated to enhance performance characteristics for broader firing range, applicability to surface and versatility in design. Use them with translucent gloss glazes, crystals and stoneware glazes for beautiful glaze combinations. The color palette has been updated to include new brilliant reds and orange, along with fashionable contemporary colors. Our Underglazes are priced affordably for all artists and to fit all budgets.



UG-51
China White



UG-67
Ivory



UG-42
Light Yellow



UG-46
Bright Yellow



UG-203
Squash Yellow



UG-214
Peachy Pink



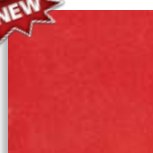
UG-85
Orange Sorbet



UG-58
Harvest Gold



UG-204
Orange



UG-206
Fire Engine Red



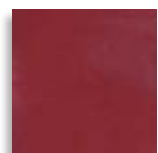
UG-207
Flame Red



UG-213
Cinnamon



UG-208
Dragon Red



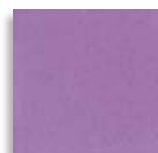
UG-10
Crimson



UG-146
Pink Pink



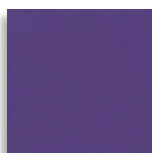
UG-92
Lilac



UG-87
Regal Purple



UG-93
Wild Violet



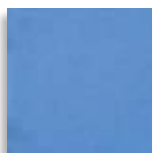
UG-94
Pansy Purple



UG-3
Baby Blue



UG-72
Wedgewood Blue



UG-2
Sea Blue



Pictured on opposite page L to R: Underglaze at low fire, Underglaze at mid-range fire.

Opaque Underglazes (continued)



A.



UG-19
Electra Blue



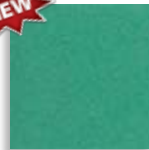
UG-97
Bright Blue



UG-1
Kings Blue



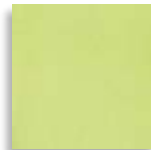
UG-82
Tucson Turquoise



UG-209
Jade



UG-91
True Teal



UG-68
Apple Green



UG-22
Spring Green



UG-90
Green Mist



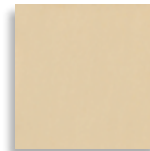
UG-21
Leaf Green



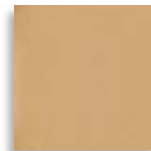
UG-211
Olive



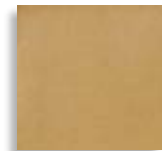
UG-210
Forest Green



UG-37
Suntan



UG-32
Cocoa



UG-30
Sand



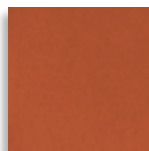
UG-205
Mustard Yellow



UG-57
Spice Brown



UG-212
Caramel



UG-100
Terra Cotta



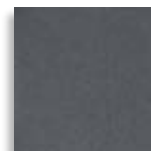
UG-31
Chocolate



UG-34
Chestnut Brown



UG-53
Silver Grey



UG-198
Dark Grey



UG-50
Jet Black



B.



C.



D.

A. Stoneware glaze at mid-range firing with Underglaze used in Mishima technique. • B. Glaze combination with Underglaze and Stroke & Coat® Accents • C. Polished Underglaze. D. Glaze combination of Underglaze and Stoneware glaze at mid-range fire.



One Stroke™ Translucent Underglazes

One Strokes™ are highly pigmented translucent glazes developed for design work on greenware or clay. They are best used for painting intricate details – not meant for large area or overall coverage (use underglazes for overall base color). Non-toxic and food safe.



OS-2
Snow White



OS-59
Sunflower



OS-46
Bright Red



OS-21
Petal Pink



OS-3
Lip Red



OS-47
Purple



OS-29
Delft Blue



OS-4
Chinese Blue



OS-32
Shamrock Green



OS-6
Foliage Green



OS-34
Sienna Brown



OS-36
Umber



OS-8
Briarwood



OS-1
Mirror Black



Clear Glazes

Mayco clear glazes preserve and enhance the surface of your work. Functionally, clear glaze forms an impervious barrier that protects against liquids, dirt and abrasion. Aesthetically, our clear glazes provide a gloss or satin sheen over top of your colored glaze decoration. Please refer to specific product labels and our website for detailed instruction on using and storing clear glazes. These clear glazes are all non-toxic and food safe.

- **NT-CLR Clear One Dipping Glaze** – Fast drying and has a gloss finish.
- **S-2101 Crystal Clear Brushing** – Clean, clear surface. Dinnerware safe and luster compatible.
- **S-2000 Crystal Clear Dipping** – Ideal for large quantities of pieces. Dinnerware safe and luster compatible.
- **C-300 Matte Transparent Glaze** – Matte Sheen. Gloss glaze at higher temperatures. Dinnerware safe and luster compatible.

Astro Gems™ Textural Glazes

Astro Gems™ are an underglaze-like textural glaze that contains tiny crystals. When fired these crystals provide jewel-like spots on the matte surface of the glaze. Astro Gems™ can be applied to both greenware and bisque.

Astro Gems™ are non-toxic. Not recommended for dinnerware due to surface characteristics.



AS-510
White Opal



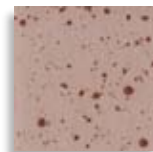
AS-518
Amethyst



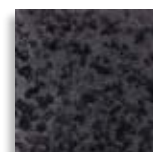
AS-513
Golden Sand



AS-516
Sand Stone



AS-527
Smoky Topaz



AS-512
Black Diamond



Mayco
Stoneware



Agile & Complex

Stoneware glazes offer graceful variegation and movement without running; alternative firing conditions elicit exciting, new personalities. Our Stoneware glazes can be combined with each other or other product lines such as Stroke & Coats® or Elements™ for unique looks, complimenting the artist's clay creation.



Stoneware Glazes

Mayco's Stoneware glazes are formulated to be friendly to the user in application and firing. Our new colors feature four crystal glazes, which are stoneware bases with a glassy frit crystal that will molten during firing. We also introduce two new translucent colors in our Ice Glaze line – Turquoise and Pistachio. Mayco's stoneware glazes are non-toxic and food safe.

- **Wide Temperature Range** – Designed to fire to cone 6; can be successfully used at cone 10, oxidation or reduction.
- **Movement Without Running** – Mayco Stoneware glazes will move to create interest and visual appeal without running off your ware and ruining your kiln shelves.
- **Glaze Compatibility** – Stoneware glazes work well with each other and other Mayco glazes, providing endless opportunities to combine and layer to create intriguing visual effects.



SW-100
Blue Surf



SW-101
Stoned Denim



SW-102
Silver Sage



SW-103
Sisal



SW-104
Black Walnut



SW-105
Frost Blue



SW-106
Alabaster



SW-107
Dunes



SW-108
Green Tea



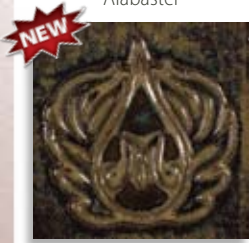
SW-109
Capri Blue



SW-110
Oyster



SW-111
Wrought Iron



SW-112
Tiger's Eye



SW-113
Speckled Plum



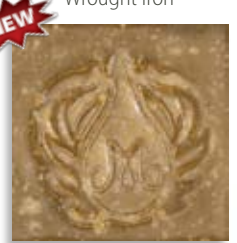
SW-114
Iron Wash



SW-115
Midnight Rain



SW-116
Robin's Egg



SW-117
Honeycomb



SW-118
Sea Salt



SW-119
Cinnabar



SW-201
Turquoise



SW-202
Pistachio



Glaze combinations of various Stoneware Glazes.

Raku Glazes

Our Raku glazes produce a variety of metallic, luster and crackled finishes. Varying your firing methods, choice of combustible materials, etc. will produce dramatically different results.

Raku Glazes are non-toxic. Not recommended for dinnerware due to surface characteristics.



RK-100
Black Metallic



RK-101
Copper Metallic



RK-102
Patina Metallic



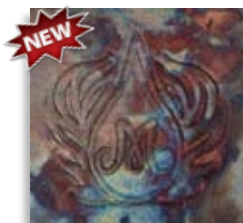
RK-103
White Crackle



RK-104
Red



RK-105
Copper Penny



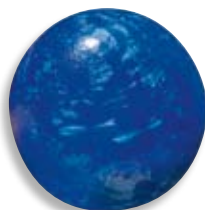
RK-106
Peacock Matte



RK-107
Oil Slick

Crystalline Glazes

Our Crystalline glaze program creates opalescent crystals with more consistency, higher probability of growth and with a greater level of control over the location of crystal development. Our Crystalline system involves the use of three products: Engobes, Seeding Media and Crystalline Clear. Crystalline Glazes are non-toxic and food safe.



CR-201
Dark Blue Engobe
with CR-100 & CR-301



CR-202
Light Blue Engobe
with CR-100 & CR-301



CR-203
White Engobe
with CR-100 & CR-301



CR-204
Black Engobe
with CR-100 & CR-301



CR-205
Pink Engobe
with CR-100 & CR-301



CR-201
Dark Blue Engobe



CR-202
Light Blue Engobe



CR-203
White Engobe



CR-204
Black Engobe



CR-205
Pink Engobe

Additional Products:

- **CR-100** Crystalline Clear, Wide-Mouth Squat Pints
- **CR-301** Seeding Media, 4 ounce
- **CR-Kit/1** Crystalline Kit, contains:
CR-100, CR201, CR-301

Fired Product Kits

Stroke & Coat® Kits

Our Stroke & Coat® kits contain a collection of some of the most popular colors from our versatile, easy-to-use, high performance glaze line.

KIT 1

SC-KIT1 Contains 12 - 2 oz. squeeze bottles, one each of the following colors.

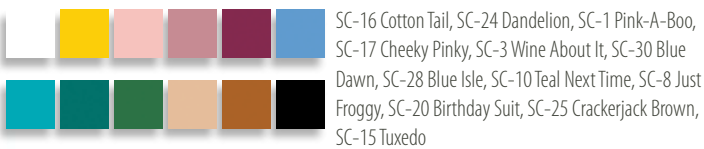
SC-KT1P Contains 12 pint bottles, one each of the following colors.



KIT 2

SC-KIT2 Contains 12 - 2 oz. squeeze bottles, one each of the following colors.

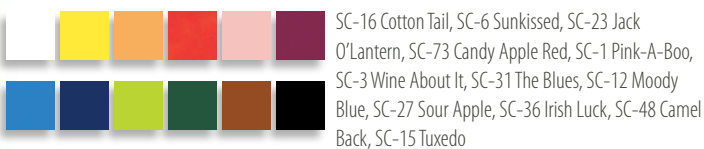
SC-KT2P Contains 12 pint bottles, one each of the following colors.



KIT 3

SC-KIT3 Contains 12 - 2 oz. squeeze bottles, one each of the following colors.

SC-KT3P Contains 12 pint bottles, one each of the following colors.



KIT 4

SC-KIT4 Contains 12 - 2 oz. squeeze bottles, one each of the following colors.



Speckled Stroke & Coat® Kit

Our Speckled Stroke & Coat® kit contains a collection of speckled versions of the most popular colors from our versatile, easy-to-use, high performance glaze line.

SP-KIT1 Contains 12 - 2 oz. squeeze bottles, one each of the following colors.



Foundations Kits

Our Foundations kits contain collections of the most widely used colors of our base gloss glaze line.

KIT 3

FN-KIT3 Contains 12 - 4 oz. jars, one each of the following colors.

FN-KT3P Contains 12 pint bottles, one each of the following colors.



KIT 6

FN-KT6P Contains 6 pint bottles, one each of the following colors.



Crystal Glazes Kit

Our crystal glaze kits contain a collection of the most popular colors of our crystal infused gloss glazes.

CRYSTALITES™ KIT

S-2700K Contains 12 - 4 oz. jars, one each of the following colors.



JUNGLE GEMS™ CRYSTAL GLAZES KIT

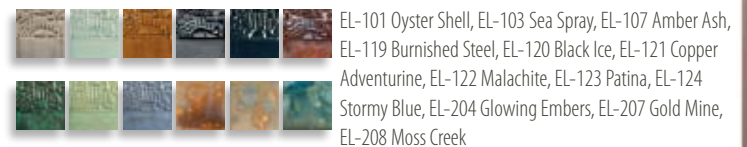
CG-KIT1 Contains 12 - 4 oz. jars, one each of the following colors.



Elements™ & Elements Chunkies™ Kit

Our Elements™ and Elements Chunkies™ kit contains a collection of our natural earth tone and crystal infused earth tone glazes.

EL-KIT1 Contains 12 - 4 oz. jars, one each of the following colors.



Underglazes Kits

Our Underglazes glaze kit contains a sampling of our popular glaze colors suitable for bisque and clay.

UG-KIT1 Contains 12 - 2 oz. squeeze bottles, one each of the following colors.

UG-KT1P Contains 12 pint bottles, one each of the following colors.



Acrylics & Stains



Pure, Lavish Color

Richness in body, deep color and pigment in every stroke. In addition to a wide choice of color in the opaque line, use our Dazzling Metallics™ or Softees® Pearls to add a precious metal or pearlescent appearance to your creation. Try Magic Metallics™ for unique finishes that intrigue the mind as well as the eye.

Softees® Acrylic Stains

Softees® are water-based acrylic stains that dry to a solid opaque finish. Used alone, they present beautiful rich colors; they also provide an excellent base for specialty stains and metallics. While they do not require a sealer, sealing does protect your project against soiling and abrasion. Softees® are non-toxic.

							
SS-135 White	SS-45 Buttermilk	SS-2 Lemon Meringue	SS-247 Bright Yellow	SS-111 Brightest Yellow	SS-3 Honey Toast	SS-254 Golden Ochre	SS-209 Orange Peel
							
SS-210 Orange	SS-179 Antique Red	SS-173 Red	SS-176 Christmas Red	SS-6 Santa Red	SS-7 Country Apple	SS-100 Old World Santa Red	SS-141 Light Pink
							
SS-32 Razzberri	SS-151 Rich Rose	SS-92 Royal Fuchsia	SS-28 Hushed Violet	SS-368 Dusty Violet	SS-370 Deep Purple	SS-104 Royal Plum	SS-29 Dew Drop Blue
							
				SS-331 Medium Blue	SS-335 Rich Blue	SS-337 Dark Blue	SS-356 Wedgewood Blue
							
				SS-339 Navy	SS-317 Turquoise	SS-21 Irish Cream	SS-288 Bright Green
							
				SS-294 Holly Green	SS-276 Forest Green	SS-376 Limeburst	SS-19 Country Sage
							
				SS-48 Artichoke	SS-272 Yellow Green	SS-377 Hunter Green	SS-57 Accent Green
							
				SS-125 Portrait	SS-127 Medium Portrait	SS-192 Light Taupe	SS-183 Rich Peach

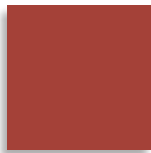




SS-211
Orange Rust



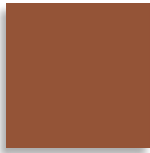
SS-399
Terra Cotta



SS-373
Brick Red



SS-372
Cherokee Tan



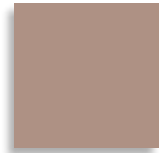
SS-198
Chocolate



SS-24
Chocolate Fudge



SS-212
Light Umber



SS-194
Medium Taupe



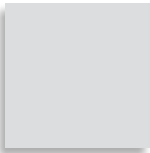
SS-234
Medium Mocha



SS-217
Dark Umber



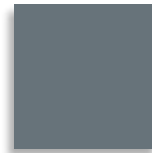
SS-237
Dark Brown



SS-108
Light Gray



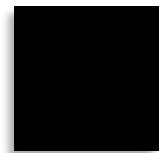
SS-130
Medium Gray



SS-132
Slate Gray



SS-138
Flat Black



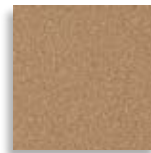
SS-137
Jet Black



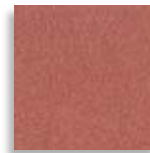
SS-459
Gold Highlights



SS-87
Emperor's Gold



SS-80
Glorious Gold



SS-89
Copper



SS-85
Ice Blue

Dazzling Metallics™

Dazzling Metallics™ water-based acrylic stains shine like the precious metals for which they are named. Dazzling Metallics™ are non-toxic.



SS-86
Crystal Green



SS-386
Bronze



SS-388
Sculpture Bronze



SS-81
Shimmering Silver

Softees® Pearls

Softees® Pearls water-based acrylic stains offer high luster metallic and pearlescent finishes. Softees® Pearls are non-toxic.



SS-112
White Metallic Pearl



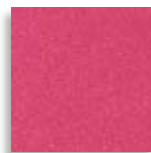
SS-114
Oyster Pearl



SS-113
White Iridescent Pearl



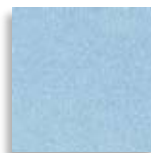
SS-123
Rose Pink Pearl



SS-116
Satin Red Pearl



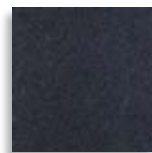
SS-117
Purple Pearl



SS-118
Sky Blue Pearl



SS-115
Champaign
Golden Pearl



SS-417
Black Pearl



Translucent Oil Based Stains

Translucent solvent-based stains are concentrated translucent colors generally used for highlighting and antiquing. These stains can be applied over Softees® and other water-based colors. Clean up with mineral spirits.

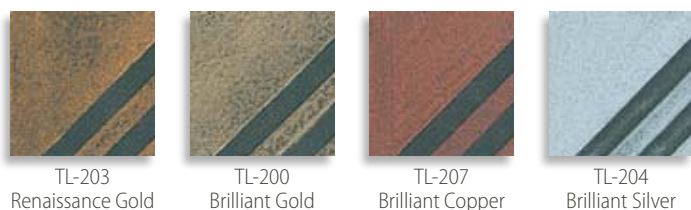
Translucent Oil Base Stains are Health Caution.



Twinkles Oil Base Stains

Twinkles solvent-based stains are concentrated translucent colors generally used for highlighting and antiquing. Twinkles contain small flecks of glitter that provide a slight metallic effect. These stains can be applied over Softees® and other water-based colors. Clean up with mineral spirits.

Twinkles Oil Base Stains are Health Caution.



Touch 'n Glo Wax Metallics

Wax Metallics are a soft, creamy wax metallic paste used for rouging or highlighting ceramic stain pieces with a hint of metallic shine. Apply with your fingertip, clean up with mineral spirits.

Touch 'n Glo Wax Metallics are Health Caution.



Sparkling Sandstones

These textured water-based acrylic stains feature flecks of glitter that shimmer against rich colors, some simulating patterns of stone and minerals. Sparkling Sandstones are non-toxic.



CSS-21
Gold Stone



CSS-59
True Granite



CSS-25
Pumpkin



CSS-53
Pink



CSS-55
Purple



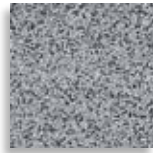
CSS-8
Blue Shale



CSS-56
Olivine



CSS-4
Golden Sandstone



CSS-3
Grey Siltstone

Magic Metallics™

Magic Metallics are water-based acrylics that contain real metal particles – not a faux finish. Any surface – ceramic, wood, fabric, glass – can be made to appear as if it is metal.

Most unique is the ability to oxidize the metals using Patina and Quick Rust (for use on steel). Can be mixed with other acrylics.

Magic Metallics are non-toxic.



MM-100
Aluminum Metallic



MM-101
Brass Metallic



MM-102
Copper Metallic



MM-103
Dark Bronze
Metallic



MM-105
Gold Metallic



MM-106
Steel Metallic



MM-200
Verde Green Patina



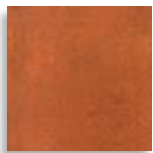
MM-201
Aqua Blue Patina



MM-202
Green Patina



MM-204
Purple Tint



MM-305
Rapid Rust





AC-301 Repellent Sealer

- A water-resistant mineral spirits base sealer.
- Ideal for waterproofing porous surfaces, and non-fired acrylic stains.

AC-302 Wax Resist

- Wax coating that repels glaze.
- Protect previous design work or use to enhance organic design.
- Burns off during firing.

AC-303 Liquid Mask

- Latex coating assists design process – cordon off areas, create boundaries, etc.
- Liquid mask blocks out design.
- Use on bisque over acrylic stains.
- To be removed before firing.

AC-304 Media

- Gum based additive used to dilute glazes.
- Chemically similar to glaze, colors respond to thinning or reconstitution better with media than with water.

AC-306 Clay Mender

- Clay based additive that can be used to repair greenware or bisque surface defects.

AC-501 Gloss Brush-On Sealer

- Water base formula seals ceramics with a glossy finish.
- Use over acrylic stains.

AC-502 Matte Brush-On Sealer

- Water base formula seals ceramics with a matte finish.
- Use over acrylic stains.

AC-510 Gloss Spray

- Durable, quick-drying, crystal clear finish.
- For ceramic bisque and many other crafts.

AC-512 True Gloss Spray

- Produces a clear glaze finish without firing.
- For ceramic bisque and many other crafts.

AC-514 Matte Spray

- Quick-drying, satin-like finish.
- For ceramic bisque and many other crafts, like charcoal drawing, decoupage, poster work, and much more.

AC-516 Porcelain Mist Spray

- Produces a porcelain-like look on non-fired ceramics.
- Use light application on items decorated with gold or metallics.
- Great for chalking.

AC-520 Solvent Cleaner

- Removes mineral spirit based products from brushes.
- No irritating fumes or odors.

AC-522 Weathered Krackle

- Creates a distressed wood look.

AC-523 Non-Fired Snow

- Create dimensional effects on glazed and non-fired surfaces.

AC-525 Brush Cleaner

- Conditions and cleans all glazes and stain brushes, except Overglaze brushes.
- Breaks up dried Acrylic stains in brushes.

AC-527 Mending & Sculpting Paste

- Texturing medium that can also be tinted using acrylic stains such as Softees.
- Use to mend cracks on non-fired finishes.
- Use with cake decorating tools to create “frosting” effects.
- Do not fire.

Decorating Accessories

Products featured below help achieve special effects and surface textures on their own or in conjunction with other Mayco non-fired products.

Detailer Bottle – various tips assist in the creation of large designs to fine script.

Stick Sponges – can be used to create repetitious design – also very useful for applying glaze to Designer Stamps.

Carbon Paper – trace designs onto ware and glaze. Carbon will fire out in the kiln.

- **AC-211** Sponge-on-a-Stick 3/8” Round
- **AC-212** Sponge-on-a-Stick 3/4” Round
- **AC-213** Sponge-on-a-Stick 1 1/4” Round
- **AC-219** Designer Bottle with Writer Tip
- **AC-220** Detailer Tips and 1 oz. Bottles
- **AC-222** Medium Writer Tip (2 oz. bottle, metal writer tip, plastic detailer tip and cap.)

- **AC-223** Large Writer Tip (2 oz. bottle, metal writer tip, plastic detailer tip and cap.)
- **AC-224** Plastic Detailer Caps (6 caps for 2 oz. squeeze bottle.)
- **AC-226** Pop-up Caps
- **AC-230** Clay Carbon Paper

AC-219 Designer Bottle with Writer Tip



Detailer Bottles & Tips



Stick Sponges



Designer Stamps

Mayco Designer Stamps serve to apply glaze and create designs in moist clay. Glaze is lightly applied to the stamp and pressed against your ware. Stamps can be used to create outlines to which additional color can be added or used to apply your chosen colors. As a clay tool, stamps can be pressed into clay to create designs or patterns that can be cut and applied as a raised design effect.

- Use for glaze application as an outline or apply color
- Press into clay
- Use in glass fusing



ST-100
Game Board Stamp



ST-101
Eeeks Stamp



ST-102
Snow Stamp



ST-103
Retro Star Stamp



ST-104
Skyline Stamp



ST-105
Dancing Heart Stamp



ST-106
Summer Days Stamp



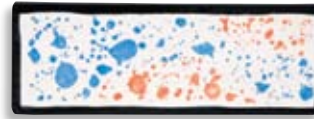
ST-107
Holly Border Stamp



ST-108
Holiday Lights Stamp



ST-109
Butterfly Garden Stamp



ST-110
Paint Splatter Stamp



ST-111
Four Flowers Stamp



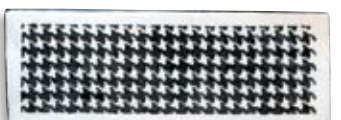
ST-112
Box Blooms Stamp



ST-113
Circulate Stamp



ST-114
Starry Swirls Stamp



ST-115
Houndstooth Check Stamp



Designer Stamp Kits

- **ST-KIT1** Stamp Assortment: (contains one of each of ST-352, ST-353, ST-366, ST-367, ST-368, ST-370, ST-373, ST-374, ST-379, ST-383, ST-389, ST-390, and ST-392)
- **ST-KIT2** Stamp Assortment: (contains one of each of ST-100 thru ST-112)
- **ST-KIT3** Mini Stamp Kit: Includes 10, 1" square stamps, stylus to attach the stamps to (for ease of use), and carrying case to keep the stamps together.



ST-116
Floral Flourish Stamp



ST-117
Tribal Stamp



ST-118
Stick Family Stamp



ST-119
Bamboo Stamp



ST-120
Celtic Knot Stamp



ST-121
Butterfly Stamp



ST-122
Chinese Symbol Stamp



ST-123
Paw Prints Stamp



ST-124
Maze Stamp



ST-125
Wave Stamp



ST-352
Jumbalaya Stamp



ST-353
Jumbo Swirl Blocks Stamp



ST-366
Fruit Blossoms Stamp



ST-367
Leafy Border Stamp



ST-368
Ornate Border Stamp



ST-370
Asian Influence Stamp



ST-373
Cube Faces Stamp



ST-374
Design Cats Stamp



ST-379
Totem Blanket Stamp



ST-383
Chain Link Stamp



ST-389
Reef Rendezvous Stamp



ST-390
Mirrored Triangles Stamp



ST-392
Tickle, Tickle Stamp



ST-KIT3
Mini Stamp Kit



A.

A. Design stamped into clay.



Brushes

Mayco offers brushes suitable for applying both glaze and acrylic products. Generally, glaze brushes feature softer bristles made from natural hair or natural synthetic blends; acrylic brushes tend to be stiffer and made using synthetic hair or synthetic/natural blends.

Finding a brush that fits your glazing style, that leaves the fewest visible brushstrokes, really should be your major decision variable.

Reflections glaze brushes feature acrylic handles and silky smooth taklon synthetic hairs.



The following description of brush types will help you choose the proper brush for your decorating needs. See website (maycocolors.com) for all available items.

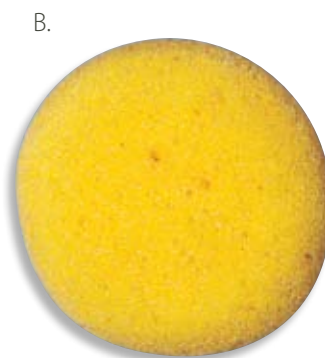
- 1. **Detailers:** Maximum control of glaze application – perfect for delicate, detailed strokes. Liners are great for outlining. Spotters for pinpoint application.
- 2. **Rounds:** Long, tapered bristles make them useful for controlled glaze application and some detailing.
- 3. **Shaders:** Used for blending, floating and shading strokes. Bristles are firmer than on a mop and come in a variety of styles.
- 4. **Flat:** For general all-over coverage. Long, firm hairs help spread glaze quickly and evenly over a surface.
- 5. **Mops:** For broad, soft glaze application. Soft hairs help with putting thinner glazes over existing drying layers without damaging lower layers.
- 6. **Splatter Brush:** The extra long hairs help the paint to “splatter” or apply flecks of color to the ware.
- 7. **Fans:** Soft, loose structured hairs are great for blending glazes, smoothing out drips, and applying specialty glazes, such as crystal glazes.

Studio Tools & Accessories

Basic cleaning, carving and spreading tools for any ceramic studio. Viscosity cup is a necessity for monitoring glaze thickness in your dipping tank.

Tools:

- 1. **BT-903** Palette Knife
- 2. **BT-902** Double End Stylus
- 3. **BT-904** Large Clean-up
- 4. **BT-901** Small Clean-up
- A. **VC-497P** Viscosity Cup
Measurement tool used in a dipping glaze tank.
- B. **BT-910** Synthetic Sponges
Use as general cleaning tool for bisque and greenware.



Mayco Gallery

Welcome to the Mayco Gallery featuring ceramic, artists' unique creations using our glazes. For more inspiration, check out our website at www.maycocolors.com.



By David Schmitz featuring Crystalline Glazes.



By Steven Sylvester featuring Stoneware & Stoneware Glazes with crystals.



By Andy Summers featuring Cobblestones.



By Lisa Bore Culp featuring Stoneware and Raku Glazes.



By Ben Clark featuring Stoneware Glazes.



By Maria Pilar Del Pino featuring Stroke & Coat®.



By Marcia Roullard featuring Underglazes.



By Thomas Funke featuring Stoneware Glazes.



By John Dean featuring polished Underglazes, Foundations Sheers and Stroke & Coat® Accents.



By Dani Olmi featuring Classic Crackles™.



By Marcia Roullard featuring Jungle Gems™, Foundations and Stroke & Coat®.



By Thomas Funke featuring Stoneware Glazes.



By Marcia Roullard featuring Foundations, Stroke & Coat® and Stroke & Coat® Accents.



By Michael Horbridge featuring Raku Glazes.



By Lisa Bare Culp featuring Stoneware Glazes.



By Marcia Rouillard featuring Foundations & Stroke & Coat®



By Lisa Bare Culp featuring Stoneware Glazes with crystals.



By Thomas Funke featuring Stoneware Glazes.



By Maria Pilar Del Pino featuring Stroke & Coat®

General Product and Safety Information

Mayco Quality Pledge: All Coloramics' products are designed and factory tested to meet our standards of quality and performance. We guarantee that every product we ship will perform in accordance with our recommended usage guidelines and we will replace any product that is proven defective because of manufacture at no cost.

Recommended Usage Guidelines: The official sanctioned conditions under which each product was designed to perform is listed in the Mayco Book (website link: Product Usage Information).

Alternative Usage Guidelines: Desirable and interesting results may be obtained through non-standard uses of our products (website link: Tips For Use may include appealing variations). Because of the variability in the chemical content of slip, temperature variation within kilns, organic materials used in glazes and a host of other variables, we cannot warrant any product used in a non-standard manner. Coloramics cannot be responsible for any incidental or consequential damages that result in whole or in part from the use of its products.

It is the responsibility of the end user to determine the suitability of a product for any non-standard use. We strongly recommend the test firing of glazes and/or application techniques new to the user, especially in commercial applications where large production quantities are involved.

Safety Information: Observing simple safety precautions will assure your experience with ceramic products to be a safe and pleasurable one. There is a variety of safety and product usage on our website, including Material Safety Data Sheets (MSDS), a Health and Safety Bulletin, official product usage information and additional tips for use. We also provide a technical support consultant that can be reached via phone and/or email (614-675-2031 or technical@maycocolors.com).

Product Labeling: All Coloramics glazes are submitted to an independent certified toxicologist for proper labeling in accordance with standards set by the American Society for Testing and Materials (ASTM), reference ASTM D-4236. We strongly urge that users read all labels as well as visit our website for more specific information on each product. Some verbiage and signage you will find on the label:

 **Certified Non-Toxic:** Products bearing the Non-Toxic seal have been reviewed by a toxicologist and deemed to have no health risk associated with the proper use of the product.

 **Certified Health Caution:** Products bearing the Health Caution seal have appropriate health warning information concerning their use. In addition, there may be additional warnings for compliance with Proposition 65 in California.

Food Safe: Glazes bearing a Food Safe designation have been tested by an independent lab and have been found to be within standards and guidelines set by the Food & Drug Administration for use with dinnerware. Note: Glazes that are Certified Non-Toxic are also Food Safe.

Not Suitable for Dinnerware Surfaces: These glazes, while technically Food Safe according to FDA standards, may not be suitable for dinnerware due to surface characteristics such as pitting, crazing, etc.

Español

Información General sobre los Productos y su Seguridad

Compromiso de Mayco con la Calidad: Todos los productos Coloramic están diseñados y probados en fábrica para alcanzar nuestros altos estándares de calidad y desempeño. Garantizamos que cada producto que embarcamos tendrá un desempeño de acuerdo a nuestras instrucciones de uso recomendadas y que remplazaremos sin costo para el usuario cualquier producto que se haya comprobado tenga un defecto debido a su fabricación.

Instrucciones de Uso Recomendadas: Las condiciones oficiales aprobadas bajo las cuales cada producto fue diseñado para ser usado están listadas en el Mayco Book (el enlace en nuestro sitio en la Web: Product Usage Information).


Instrucciones para Usos Alternativos: Se pueden obtener resultados bellos y de gran efecto usando nuestros productos en forma no convencional (el enlace en nuestro sitio en la Web: Tips For Use se puede encontrar variaciones interesantes). Debido a la gran variedad que existe en el contenido químico de la barbotina, la variación de temperatura entre los hornos cerámicos, materiales orgánicos usados en los vidriados y otra cantidad de variables, no podemos garantizar un producto que sea usado de un modo distinto para el que fue diseñado. Coloramics no puede ser responsable por daños incidentales o consecuenciales que pueden surgir en todo en parte del uso de sus productos.

El usuario es responsable por determinar si un producto es apropiado para ser usado de un modo no establecido en las instrucciones de uso. Recomendamos firmemente hacer una prueba de quema previa de los vidriados y de las técnicas nuevas para el usuario, especialmente en aplicaciones industriales que involucren una gran cantidad de piezas.

Información de Seguridad: Observar algunas simples precauciones de seguridad le garantizará una experiencia agradable y segura al usar productos cerámicos. En nuestro sitio en la Web, encontrará una variedad de información sobre los productos y su uso, incluyendo las Hojas de Datos de Seguridad del Producto (MSDN, por sus siglas en inglés), un boletín de Salud y Seguridad, información sobre el uso oficial del producto y sugerencias adicionales para el uso. Además, ofrecemos un consultor de ayuda técnica que puede ser contactado por teléfono al (614-675-2031 o por correo electrónico: technical@maycocolors.com).

Etiquetado del Producto: Todos los vidriados Coloramics son sometidos para su análisis a un toxicólogo independiente, para el etiquetado correcto de acuerdo con los estándares establecidos por la Sociedad Americana para Pruebas y Materiales (ASTM, por sus siglas en inglés), referencia ASTM D-4236. Recomendamos firmemente que los usuarios lean todas las etiquetas y también que visiten nuestro sitio Web, para obtener información específica para cada producto. A seguir explicamos algunas expresiones y aviso que usted encontrará en las etiquetas:

 **Certified Non-Toxic (con certificado de no tóxico):** Los productos que tienen este sello en la etiqueta han sido analizados por un toxicólogo y se ha comprobado que no presentan un riesgo para la salud asociado con el uso apropiado del producto.

 **Certified Health Caution (certificados como con advertencia de salud):** Los productos que tienen este sello tienen información de salud apropiada con advertencias relacionadas a su uso. Además, puede haber advertencias adicionales para cumplir con los requisitos de la Proposición 65 en California.

Food Safe (Adecuado para Recipientes de Comida): Los vidriados identificados como Adecuados para Recipientes de Comida han sido analizados por un laboratorio independiente y los resultados están dentro de las directrices y estándares establecidos por la Administración de Alimentos y Drogas para su uso en recipientes de comida. Nota: Los vidriados Certificados como No-Tóxicos también son adecuados para Recipientes de Comida.

Not Suitable for Dinnerware Surfaces (No Apropriado Para Superficies de Vajillas): Estos vidriados, aunque técnicamente son adecuados para Recipientes de Comida porque cumplen con los estándares de la FDA, pueden no ser apropiados para superficies que estarán en contacto con alimentos y bebidas, debido a las características de la superficie que producen como craquelado, grietas, etc.

Informations Générales sur le Produit et la Sécurité

La Promesse de Qualité de Mayco: Tous les produits Coloramics sont conçus et testés en usine afin de satisfaire nos standards de qualité et de performance. Nous garantissons que chaque produit acheminé sera performant suivant les normes d'utilisation recommandées et que nous remplacerons tout produit prouvé défectueux par fabrication et cela gratuitement.

Normes d'Utilisation Recommandées: Les conditions officielles sanctionnées dans lesquelles chaque produit a été conçu afin d'être performant sont énumérées dans le Livre Mayco (lien du site internet: Information d'Utilisation du Produit).

Normes d'Utilisation Alternative: Des résultats désirables et intéressants peuvent être obtenus sous utilisations non-standards de nos produits (lien du site internet: Des Astuces d'Utilisation peuvent inclure d'attrayantes variations). Tenant en considération la variabilité de composition chimique de la barbotine, les changements de température dans les fours, les matériaux organiques utilisés dans les émaux et un tas d'autres variables, nous ne pouvons garantir un produit utilisé de manière non-standard. Coloramics ne peut assumer aucune responsabilité pour les dommages accessoires ou consécutifs qui résulteraient entièrement ou en partie de l'utilisation de ses produits.

C'est la responsabilité de l'utilisateur de déterminer les possibilités d'utilisation d'un produit pour tout usage non-standard. Nous recommandons fortement de procéder à des tests de cuisson de l'émail et/ou de techniques d'application nouvelles pour l'utilisateur, spécialement pour des applications commerciales où il est question de production de grandes quantités.

Informations de Sécurité: Suivez de simples précautions de sécurité et vous vous garantirez une expérience sûre et plaisante avec les produits de céramique. Il existe une variété d'utilisations des produits sur notre site web, y compris Material Safety Data Sheets (Feuilles d'Informations de Sécurité de Matériel) (MSDS), un bulletin de Santé et de Sécurité, des informations officielles sur l'utilisation des produits et d'autres idées d'utilisation. Nous vous offrons également le soutien technique d'un expert par téléphone et/ou par courrier électronique (614-675-2031 ou technical@maycocolors.com).

Étiquetage de Produits: Tous les Émaux Coloramics sont soumis à l'examen d'un toxicologue indépendant certifié pour l'étiquetage approprié et en accord avec les standards établis par l'American Society for Testing Materials (ASTM), référence ASTM D-4236. Nous recommandons fortement aux utilisateurs de lire toutes les étiquettes et de visiter aussi notre site web pour obtenir plus d'informations sur chaque produit. Voici quelques exemples descriptifs et symboles que vous trouverez sur les étiquettes:



Certifié Non-Toxique (symbole): Les produits portant le sceau non-toxique ont été revus par un toxicologue et certifiés ne présenter aucun risque pour la santé lorsque le produit est utilisé suivant les instructions.



Précaution Santé Certifié (symbole): Les produits portant le sceau Précaution Santé ont les informations appropriées donnant les avertissements pour la protection de la santé lors de leur utilisation. De plus, il est possible qu'il y ait d'autres avertissements en accord avec la Proposition de Loi 65 en Californie.

Sans Danger pour Produits Alimentaires: Les Émaux portant l'étiquette Food Safe (sans danger pour Produits alimentaires) ont été testés dans un laboratoire indépendant et respectent les standards et les normes établis par la Food & Drug Administration (l'Administration de l'Alimentation et des Médicaments) pour utilisation sur articles de table. Notez: Les Émaux certifiés Non-Toxiques sont toujours Sans Danger pour les Produits Alimentaires.

Ne Convient Pas aux Surfaces d'Articles de Table: Il est possible que ces émaux, bien que techniquement Sans Danger pour Produits Alimentaires selon les standards de la FDA, ne conviennent pas nécessairement aux articles de table à cause des caractéristiques suivantes: surfaces à creux ou saillies et craquelées, etc.

Deutsch

Allgemeine Angaben zur Produktbeschaffenheit und –sicherheit

Mayco Quality Pledge (Maycos Qualitätsverpflichtung): Alle Coloramics-Produkte wurden in Fabriken entwickelt, geprüft und entsprechen unseren Bestimmungen von Qualität und Sicherheit. Wir garantieren die Leistung der von uns gelieferten Produkte bei bestimmungsgemäßer Verwendung und wir ersetzen kostenlos alle Waren, bei denen ein Herstellungsfehler nachgewiesen wurde.

Recommended Usage Guidelines (Richtlinien zur bestimmungsgemäßen Verwendung): Die offiziell genehmigten Bedingungen zur bestimmungsgemäßen Verwendung, für die jedes Produkt entwickelt wurde, werden im Maycoleitfaden angegeben (www.maycocolors.com; Product Usage Information).

Alternative Usage Guidelines (Alternative Verwendungsrichtlinien): Mit einer nicht standardisierte Verwendung unserer Produkte können wünschenswerte und interessante Ergebnisse erzielt werden (www.maycocolors.com; Tips For Use). Aufgrund von Variationen in der chemischen Beschaffenheit von Gießschlicker, von Temperaturschwankungen in Brennöfen, von in Glasuren enthaltenen organischen Materialien und einer Vielzahl anderer Faktoren können wir auf Produkte, die auf eine nicht standardisierte Art verwendet wurden, keine Garantie geben. Coloramics haftet nicht für die zufällige Schäden oder Folgeschäden, die entweder ganz oder teilweise durch die nicht standardisierte Verwendung ihrer Produkte entstehen.

Es ist die Pflicht des Endverbrauchers, die Eignung eines Produktes für einen nicht-standardisierten Einsatz sicher zu stellen. Wir empfehlen dringend, für Glasuren und/oder Auftragungstechniken, die dem Bediener unbekannt sind, einen Testbrand durchzuführen. Dies gilt vor allem für gewerbsmäßige Einsätze, bei denen es sich um große Stückzahlen handelt.

Sicherheitsinformationen: Die Einhaltung einfacher Sicherheitsmaßnahmen garantiert ihnen, dass sie den Einsatz von Keramikprodukten als ungefährlich und freudebringend erleben. Es gibt eine Vielzahl von Sicherheits- und Produktsinformationen auf unserer Website, einschließlich der Material Safety Data Sheets (MSDS), einem Bulletin mit Gesundheits- und Sicherheitsinformationen, offizielle Informationen zur Produktverwendung, und zusätzliche Tipps zum Einsatz der Waren. Des weiteren bieten wir technische Unterstützung mit Hilfe eines Beraters an, der per Telefon und/oder Email erreichbar ist (1-614-675-2031 oder technical@maycocolors.com).

Produktetiketten: Alle Coloramics-Glasuren werden von einem unabhängig zugelassenen Toxikologen untersucht, um die richtige Etikettierung in Übereinstimmung mit den von der American Society for Testing and Materials (ASTM) gesetzten Bestimmungen gewährleisten zu können. Wir empfehlen dringend, dass Verbraucher alle Etiketten lesen und sich auf unserer Website mit zusätzlichen Produktinformationen vertraut machen. Hier einige Begriffe und Zeichen, die auf den Etiketten verwendet werden:



Certified Non-Toxic (Symbol für "Zertifikat für ungiftig"): Für alle Produkte, die mit dem „Ungiftig“-Symbol versehen sind, wurde von einem Toxikologen bestätigt, dass bei einem korrektem Einsatz dieses Produktes kein Gesundheitsrisiko entsteht.



Certified Health Caution (Symbol für "geprüfte Gesundheitswarnung"): Bei Produkten, die dieses Symbol einer „Gesundheitswarnung“ tragen, werden Informationen über Gesundheitsrisiken angegeben. Zusätzlich können im Einklang mit der Proposition 65 in Kalifornien zusätzliche Warnungen gegeben werden.

Food Safe (Tafelsicher): Glasuren, die das Zeichen „Food Safe“ tragen, wurden von einem unabhängigen Labor untersucht und es wurde bestätigt, dass diese den Richtlinien und Anweisungen der Food & Drug Administration zur Verwendung auf Tafelgeschirr entsprechen. Hinweis: Glasuren, die das „Ungiftig“-Sicherheitszeichen tragen, sind auch tafelsicher.

Not Suitable for Dinnerware Surfaces (Nicht für Tafelgeschirr geeignet): Diese Glasuren können theoretisch den FDA (Food and Drug Administration) Richtlinien für „tafelsicher“ genügen, sind aber dennoch möglicherweise nicht für Tafelgeschirr geeignet, da sie Oberflächeneigenschaften wie Narbigkeit und Haarrissbildung usw. aufweisen.

Support Programs

Our commitment to Mayco consumers extends well beyond the product sale. Through our distribution partnerships and Mayco Creative Partners program, you'll have access to educational programs, project ideas, product usage tips, technical support, printed materials and Mayco staff to help make sure your Mayco experience is a positive one.

Mayco Marketplace Partners

Mayco provides many marketplace options for you to purchase and enjoy our products. Our business partners include wholesale distributors, national catalogers and retail ceramic studios that collectively offer activities and purchasing programs for every Mayco consumer. Not only do our partners provide opportunities to purchase Mayco products but they provide technical support, training and repair services for the products and equipment you use.

Many of our wholesale and catalog partners offer specialized programs to business and/or institutional accounts, such as retail ceramic studios, school districts, parks and recreation programs, etc.

Ceramic Studios primarily serve retail consumers and businesses needing smaller product quantities (i.e., individual jars, single pieces of bisque). Studios also provide a variety of consumer programs such as in-studio decorating, parties, workshops and classes, kiln firing services, custom design services, event planning, etc.

Mayco Creative Studios are unique retail studios dedicated to helping you enjoy and participate in **"Ceramics. Your Way."**[™]

A list of active distributors and Mayco Creative Studios can be found on our website. You may also email (info@maycocolors.com) or call customer service **614-876-1171** for a referral to a market partner that may meet your needs.

Mayco Creative Partners (MCPs)

MCPs serve to assist and train consumers of Mayco products. MCP's are company employees, distribution partners and independent consultants you'll see at trade shows and professional meetings, conducting workshops, in-service days for art teachers, consulting with retailers concerning studio operations – to name but a few types of assistance they can provide.

MCP consultants have a passion for ceramics and people. Previous experience and demonstrated competence in marketing, selling, design and education is required. Program flexibility allows for participants to pursue activities on a full-time or part-time basis. Program benefits include access to private website, teaching materials, sanctioned fees and day rates and product discounts on teaching supplies.

The MCP program is managed by the Director of Sales, Keith Kern (kkern@maycocolors.com). Please contact us to discuss how this program might work for you.

Trade Shows and Events

Mayco conducts and attends many events in the United States and throughout the world to familiarize consumers with our products. Our goal is to touch as many consumers as possible, offering product education and knowledge. Following are the types of events where you might find us:

- NCECA (National Council on Education for the Ceramic Arts)
- NAEA (National Art Education Association)
- CCSA (Contemporary Ceramic Studios Association)
- AFAA (American Fired Arts Alliance)
- Art Educator Workshops (individual school districts, regional chapters)
- State Art Educator Shows throughout the country
- Potter's Council Events
- Studio Regional Meetings
- Distributor Open Houses
- Mayco Pottery Camps hosted throughout the country and internationally

For a listing of our current events, please visit our website at www.maycocolors.com and view the event calendar.

Technical Support

Mayco Technical Support provides assistance with product problems, general usage, and other product-related matters. On our website you'll find standard product usage instructions, additional tips and variations of product use, troubleshooting, MSDS sheets and product update announcements. Our technical service staff consists of artists, teachers, lab technicians and ceramic engineer with years of knowledge and practical experience.

We publish a standard product usage manual, "The Mayco Book", which is available as a pdf download from our website. We also have an introductory booklet, "Ceramics 101", which presents a general overview of ceramic processes and terms.

For issues not addressed by these information resources, we provide phone: **614-675-2031** or email technical@maycocolors.com support.

Technical Support



Technical Services maintains a database of all inquiries. It is critical to the success of our technical support program that documentation procedures be followed. Providing as much information about how the product was used and fired will help expedite your request and resolve your question or problem.

• Product Info

Stock number, product size, lot number. The lot number is a manufacturing code that indicates, among other things, when the product was manufactured.

• Purchase Information

When bought, from whom, how delivered. Delivery information can be helpful especially during times of extreme weather (high heat or freezing conditions).

• Application Information

How was product applied, how was the surface handled, etc., were any other products used with the Mayco product.

• Surface Information

What surface was being decorated, for self-cast or hand made pieces – describe materials used to make greenware and/or bisque, describe bisque firing process. For items purchased – provide supplier information, shape design, condition of bisque or ceramic ware, etc.

• Firing Information

All details on the firing process that can be obtained: firing temperature, ramp rate(s) or heating schedule used (if multiple segment heating program was used), condition of shelf cones (may be asked to provide them for inspection by lab), kiln load – light or heavy, proximity of other pieces in kiln, make and model of kiln, age of kiln and/or elements, age and type of thermocouple, etc.

Product Safety

Art materials manufacturers have a history of supporting and proactively developing safe product usage and labeling. In addition to the mandatory regulations, art materials manufacturers helped develop and voluntarily abided by additional standards for labeling and classifying art products since 1983. These voluntary standards, known as ASTM D 4236, were subsequently enacted into law by Congress in 1988. Mayco is proud to be among those art materials manufacturers who continue to provide leadership in product safety communications and education programs.

Recent regulations enacted in The United States (Consumer Product Safety Improvement Act of 2008 [CPSIA]) and the European Union (REACH) represent the latest attempts to regulate and improve product safety. With new regulations comes a new level of understanding and compliance. We provide the following information so you may better understand how our products comply with the new regulations and process the information we provide on labels and materials safety data sheets (MSDS).

Safety Laws

With the initial passage of the Federal Hazardous Substances Act (FHSA) in 1960, products containing acute health hazards were required to display mandatory warnings on their labels. FHSA was amended on November 18, 1988, by the Labeling of Hazardous Art Materials Act (LHAMA) of 1988 (Sec. 23 Labeling of Art Materials [15 U.S.C. §1277]). LHAMA established that art materials sold in the U. S. must also be evaluated by a qualified toxicologist for chronic toxicity according to the chronic hazard labeling standard, ASTM D 4236.

- **Acute Toxicity** – an adverse reaction will occur within hours or days. An acute reaction might result in symptoms such as a skin rash, irritation to your eyes, or immediate sickness.
- **Chronic Toxicity** – an adverse reaction that will occur over time (months or years). A substance that causes cancer is chronically toxic.

ASTM D 4236

This is the Standard Practice for Labeling Art Materials for Chronic Health Hazards. This standard was originally developed in 1983 and it describes the process for developing precautionary labels and the hazards warning that belong on a label. When you see a symbol and/or statement on a product label that states: "Conforms to ASTM D 4236" this means:

1. An independent toxicologist has reviewed and evaluated art material product formulations.
2. Current generally accepted scientific and medical knowledge was consulted to assess formula components.
3. A report of the findings was submitted to the manufacturer indicating what, if any, hazards warning must be placed on a product label.
4. Products that do not contain any hazardous materials may then be marketed as non-toxic.

Product formulations must be reevaluated at least every five (5) years and/or when formulations change and/or medical and scientific knowledge of product components changes. Keep in mind that "health caution" and "nontoxic" designations are used in respect to the unfired glaze or acrylic.

Product Safety

Mayco Label Symbols

Mayco uses the following symbols to indicate an individual product's safety classification:



Safety Regulations

FHSA and the subsequent provision, LHAMA, and the Consumer Product Safety Improvement Act of 2008 (CPSIA) are the laws passed by Congress. The governmental agency responsible for creating policies for the enforcement of these laws is the Consumer Product Safety Commission (CPSC).

The Code of Federal Regulations (CFR), Title 16 – Commercial Practices, Chapter II – Consumer Product Safety Commission defines the practices of the agency. Part 1500 – Hazardous Substances and Articles; Administration and Enforcement Regulations contains the pertinent regulations for art materials.

Certificates of Compliance

The CPSIA of 2008 amended many sections of several federal laws; the laws pertaining to the labeling of art materials did not change.

The most significant impact of CPSIA of 2008 for art materials marketers was the requirement that a General Conformity Certificate (GCC) must be prepared for products “primarily intended” for use by children (now federally defined as age 12 and under). This certificate is the documentation that shows that the product has been tested and meets appropriate standards. The certificate must accompany the product(s) either in paper or electronic form. The Commission intends to initially focus enforcement efforts on compliance with the underlying safety rules, rather than on the certificate or form of the certificate itself.” (CPSIA Guide for Small Businesses, Resellers, Crafters, and Charities, Feb. 2009, pg. 5)

The following GCC's are available from the health and safety section of Mayco's website:

- U.S. produced bisque
- Chinese produced bisque
- All color products (glazes and acrylics)
- U.S. produced plaster products

CPSC Publications

The CPSC provides a great many pamphlets and advisories for you to download. The main index for publications can be found here: http://www.cpsc.gov/cpsc/pub/pubs/pub_idx.html

Particularly useful is document number 5015: Art and Craft Safety Guide (<http://www.cpsc.gov/cpsc/pub/pubs/5015.pdf>)

Food Safe Products

“Food safe” seems to be one of the most confusing concepts for consumers. It is sometimes used differently among manufacturers, which lends to the confusion. At Mayco, we recognize “food safe” as a legally defined term and a term of common sense practice.

“Food safe” status refers to the glaze after it has been applied and fired.

Product Safety (continued)

Legal Definition

A glaze that contains lead and cadmium is legally classified as “food safe” if it passes the leach measures outlined below: (The following excerpt is reprinted from the Society of Ceramic and Glass Decorators (SCGD) advisement, February 2008, 15th Edition)

“In November 1991, the U.S. Food and Drug Administration (FDA) announced revised standards for lead leaching from the food contact surface of five categories of ceramic foodware. These standards set the maximum level of leaching. The standards are contained in FDA’s Compliance Policy Guide and have not been issued by FDA as formal regulations. We note that they apply only to the food contact surface. These limits are not applicable to non-food contact areas such as the outside of a mug or canister.

The standards for lead are:

1. Flatware - 3.0 parts per million
2. Small Hollowware - 2.0 parts per million
3. Large Hollowware - 1.0 part per million
4. Cups and Mugs - 0.5 part per million
5. Pitchers - 0.5 part per million

The standards for cadmium are:

1. Flatware - 0.5 part per million
2. Small Hollowware - 0.5 part per million
3. Large Hollowware - 0.25 part per million

The FDA Compliance Policy Guide states that the FDA will use as an analytical method for measuring leaching that prescribed by the Association of Official Analytical Chemists as Official Methods of Analysis, 15th Ed. (1990), section 973.32. American Society for Testing Materials (ASTM) method C-738 is essentially the same method.

The lip-and-rim area of a glass tumbler or ceramic mug or cup is considered the top 20 millimeters of the outside of the item - the area the lips might touch while consuming a beverage.

SGCD worked with the FDA (as well as the Consumer Product Safety Commission and the Environmental Protection Agency) to develop standards for the leaching of lead and cadmium from the lip and rim area. The voluntary standard was officially recognized by FDA in a notice published in the Federal Register which also indicates that test method American Society for Testing Materials ASTM C-927-80 should be used.”

(Copyright: Society of Glass and Ceramic Decorators)

Please Note: Due to firing and application variances that may occur from user to user, we cannot guarantee your fired results will be food safe. If you use Mayco glazes on products that you intend to resell, you are required to provide test results to your customers. Please consult the CPSC website for updates to testing requirements as fuller implementation of the new laws unfold.

Common Sense Definition

Many Mayco glazes are designed to create surfaces textures, such as our crackle and crystal glazes. These glazes are legally eligible to be labeled “food safe”; however textured surfaces can trap food and lead to bacterial growth. Our company philosophy, consistent with our views on product safety, is to avoid using textural glazes for food surface containers. We voluntarily add the following phrase to textural glazes:

“Due to surface characteristics this glaze may not be suitable for food containers.”

Material Safety Data Sheets (MSDS)

Mayco MSDS sheets are updated every three years as is required by law. Current sheets are available from our website: <http://www.maycocolors.com/msds.cfm> in both ANSI and EC Directive formats.

All Mayco glazes represented in this catalog are certified non-toxic and safe for use by children and adults.

The following non-fired stains are labeled health caution:

- Translucent Oil-Based Stains
- Twinkles Oil-Based Stains
- Touch ‘N Glo Wax Metallic Stains



Coloramics LLC
4077 Weaver Court South
Hilliard Ohio, 43026 USA
614-876-1171
fax: 614-876-9904
www.maycocolors.com

CAT-16/E